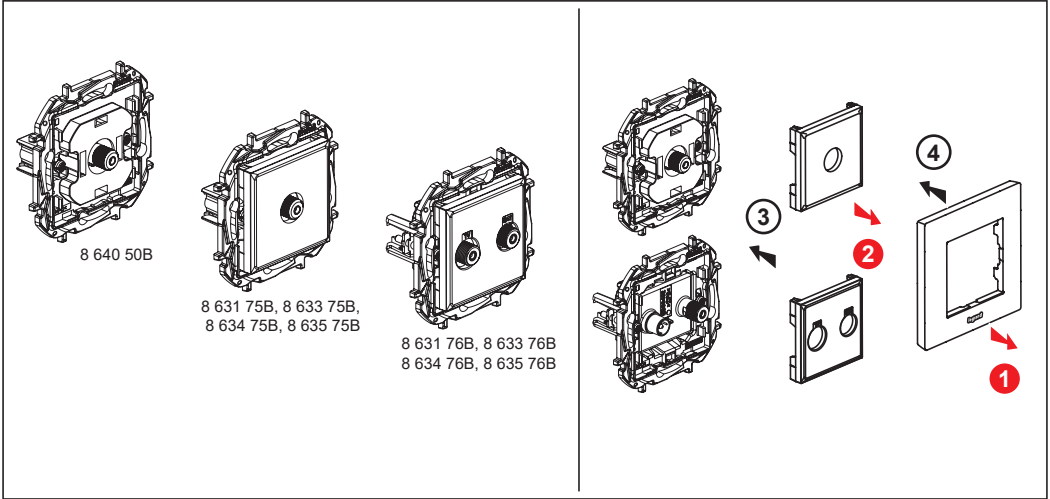
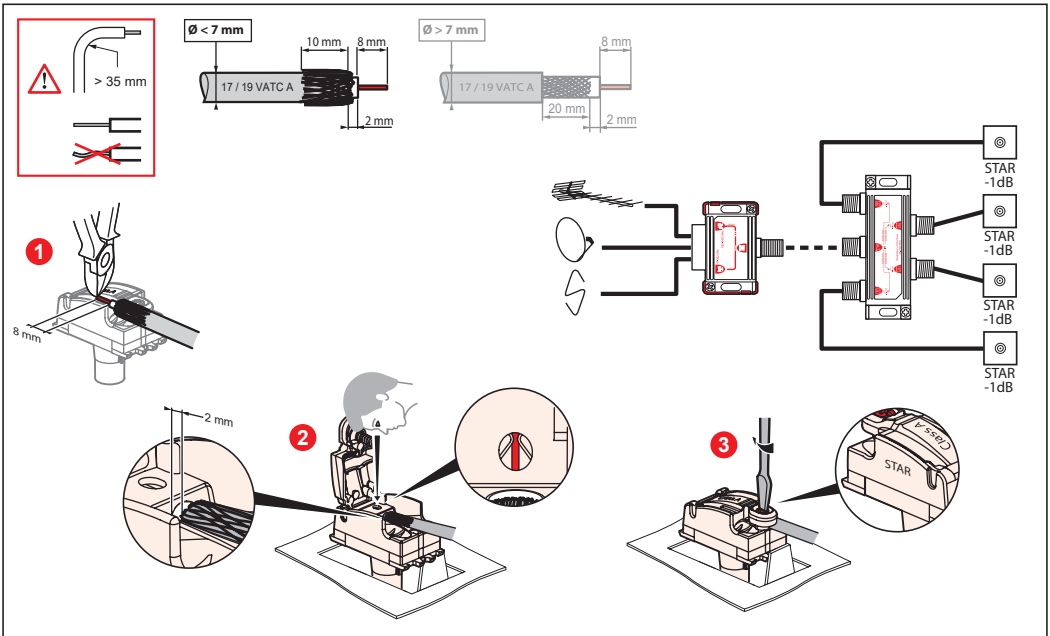


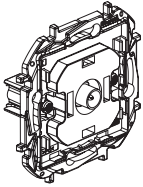
# NILOÉ<sup>STEP</sup>

8 631 73B / 74B / 75B / 76B / 78B / 79B / 80B / 82B / 83B  
 8 633 73B / 74B / 75B / 76B / 78B / 79B / 80B / 82B / 83B  
 8 634 73B / 74B / 75B / 76B / 78B / 79B / 80B / 82B / 83B  
 8 635 73B / 74B / 75B / 76B / 78B / 79B / 80B / 82B / 83B  
 8 640 50B / 51B / 52B / 53B / 54B / 55B / 56B / 57B / 58B / 59B

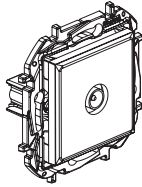


References	Frequency bands	Attenuation
8 631 75B, 8 633 75B, 8 634 75B, 8 635 75B	TV/SAT: 0-2400 MHz	1 dB maximum
8 631 76B, 8 633 76B, 8 634 76B, 8 635 76B	1-862 MHz	4 dB maximum
8 640 50B	TV/SAT: 0-2400 MHz	1 dB maximum

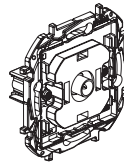




8 640 51B / 52B / 53B



8 631 72B / 73B / 74B, 8 633 72B / 73B / 74B,  
8 634 72B / 73B / 74B, 8 635 72B / 73B / 74B



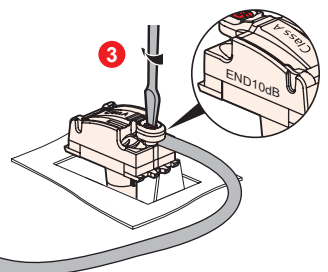
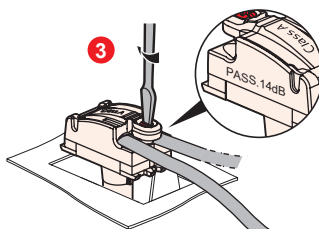
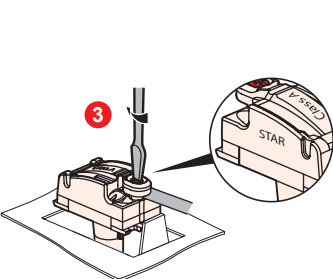
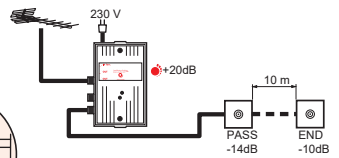
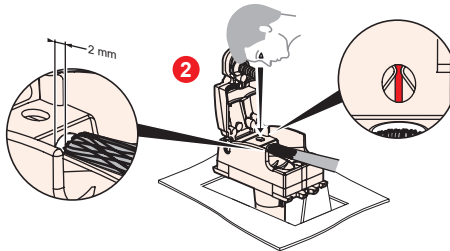
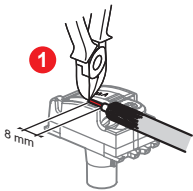
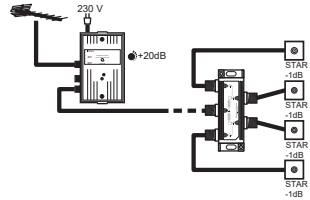
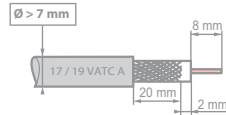
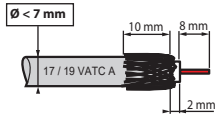
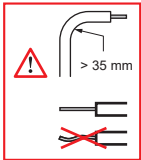
3

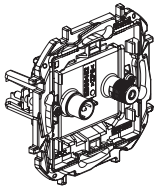
4

2

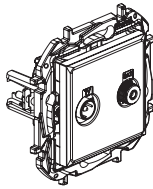
1

References	Frequency bands	Attenuation
8 631 74B, 8 633 74B, 8 634 74B, 8 635 74B	TV/SAT: 0-2400 MHz	1 dB maximum
8 631 72B, 8 633 72B, 8 634 72B, 8 635 72B	TV pass.: 0-862 MHz	14 dB maximum
8 631 73B, 8 633 73B, 8 634 73B, 8 635 73B	TV pass.: 0-862 MHz	10 dB maximum
8 640 51B	TV/SAT: 0-2400 MHz	1 dB maximum
8 640 52B	TV pass.: 0-862 MHz	14 dB maximum
8 640 53B	TV pass.: 0-862 MHz	10 dB maximum

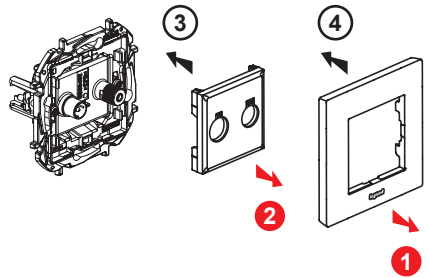




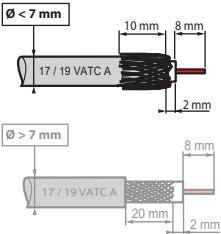
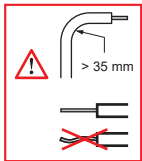
8 640 54B / 55B / 56B



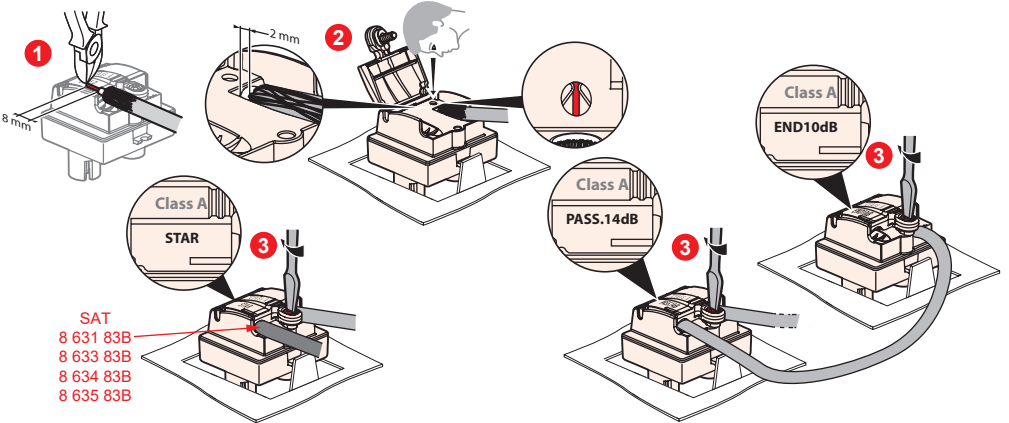
8 631 83B, 8 633 83B  
8 634 83B, 8 635 83B



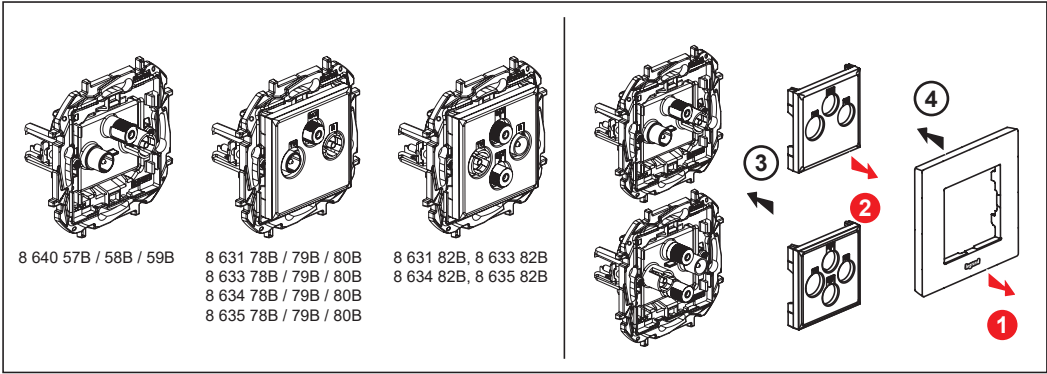
References	Frequency bands	Attenuation
8 631 83B, 8 633 83B, 8 634 83B, 8 635 83B	TV/R: 5-862 MHz, SAT: 950-2400 MHz	1,5 dB
8 640 54B	TV/R: 5-862 MHz, SAT: 950-2400 MHz	1,5 dB
8 640 55B	TV/R: 5-862 MHz, SAT: 950-2400 MHz	14 dB
8 640 56B	TV/R: 5-862 MHz, SAT: 950-2400 MHz	10 dB



References	Frequency bands	Attenuation
8 640 54B	TV-SAT	1,5 dB
8 640 55B	TV-SAT	1,5 dB + 14 dB + 14 dB
8 640 56B	TV-SAT	10 dB
8 631 83B 8 633 83B 8 634 83B 8 635 83B	TV-SAT	1,5 dB



SAT  
8 631 83B  
8 633 83B  
8 634 83B  
8 635 83B



8 640 57B / 58B / 59B

8 631 78B / 79B / 80B  
8 633 78B / 79B / 80B  
8 634 78B / 79B / 80B  
8 635 78B / 79B / 80B

8 631 82B, 8 633 82B  
8 634 82B, 8 635 82B

References	Frequency bands	Attenuation
8 631 82B, 8 633 82B, 8 634 82B, 8 635 82B	TV : 5-68 /120-862 MHz, R : 87,5-108 MHz, SAT1 : 950-2400 MHz, SAT2 : 5-2400 MHz	1,5 dB
8 631 78B, 8 633 78B, 8 634 78B, 8 635 78B	TV : 5-68 /120-862 MHz, R : 87,5-108 MHz, SAT : 950-2400 MHz	14 dB
8 631 79B, 8 633 79B, 8 634 79B, 8 635 79B	TV : 5-68 /120-862 MHz, R : 87,5-108 MHz, SAT : 950-2400 MHz	10 dB
8 631 80B, 8 633 80B, 8 634 80B, 8 635 80B	TV : 5-68 / 320-862 MHz, R : 87,5-240 MHz, SAT : 950-2400 MHz	1,5 dB
8 640 57B	TV : 5-68 / 320-862 MHz, R : 87,5-240 MHz, SAT : 950-2400 MHz	1,5 dB
8 640 58B	TV : 5-68 /120-862 MHz, R : 87,5-108 MHz, SAT : 950-2400 MHz	14 dB
8 640 59B	TV : 5-68 /120-862 MHz, R : 87,5-108 MHz, SAT : 950-2400 MHz	10 dB

**! > 35 mm**

	TV-R-SAT				
	8 631 80B 8 633 80B 8 634 80B 8 635 80B 8 640 57B				
	8 631 78B 8 633 78B 8 634 78B 8 635 78B 8 640 58B				
	8 631 79B 8 633 79B 8 634 79B 8 635 79B 8 640 59B				
	TV-R-SAT-SAT				

**SAT2**  
8 631 82B  
8 633 82B  
8 634 82B  
8 635 82B

4