



KZS-1M UNI

Universal Residual Current
Circuit Breaker with
Overcurrent Protection



EITHER WAY UP

RCBO KZS-1M UNI

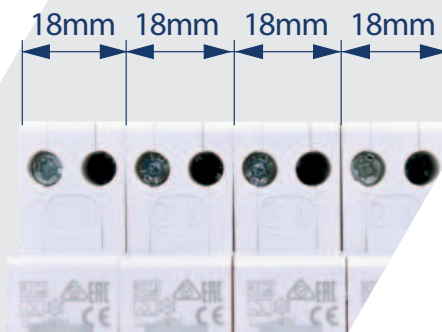
Either Way Up.

New universal KZS-1M UNI enables top and bottom, line and load compatibility for easy, fast either-way-up installations.

Enhanced Safety in Less Space

Two devices (MCB and an RCCB) in a single 1-module unit, switching active and neutral pole.

KZS-1M provides enhanced safety and protection for both people and electrical systems. It is commonly used in residential, commercial and industrial electrical installations and can be used in operating temperature down to -35°C .



Universal compatibility

The electrical supply can be connected **from top or bottom**.



The terminals accept not only **wires** but also time saving **busbars**.



Special reset version

In the reset version, the toggle position clearly indicates the reason for tripping, preventing user mistakes and always making it clear whether the system turning off was intentional (manual) or the result of a fault in the electrical circuit.

Attention to detail

Increased opening on the N pole (size PZ2 screw drive) and **clearly marked terminals** ensure appropriate connection

The option of **sealing** in the "ON" or "OFF" position.

The possibility of connecting to **SKN-type busbars**



Easy removal from existing busbar system

Separate indication of contacts' real state (independent of the toggle position) ensures additional user safety.

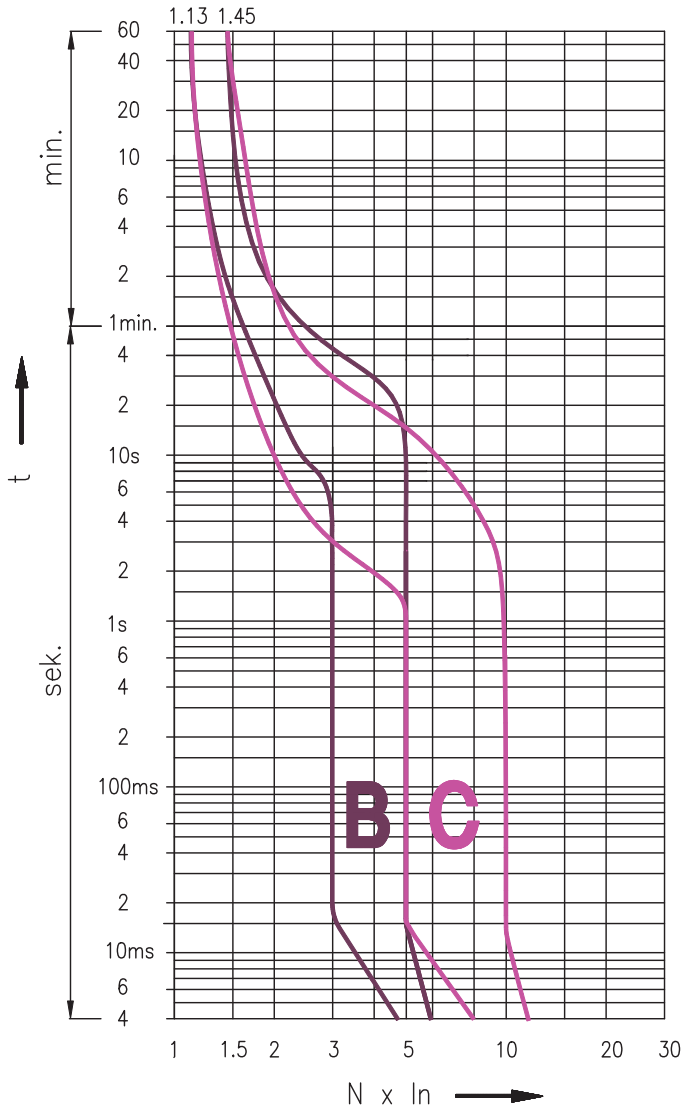
Technical data

Type	KZS 1M UNI
Rated voltage U_n	230/240 V AC
Rated current I_n	6-25 A
Minimum supply voltage U_{min}	85 V
Rated frequency f_n	50/60 Hz
Rated short-circuit capacity	6.000 A
Back-up fuse	100 A gG
Tripping characteristic	B, C
Rated residual current $I_{\Delta n}$	10, 30, 100 mA
Type of residual release	A, AC
Rated resid.making and breaking capac. $I_{\Delta m}$	1500A
Terminals	1-10 mm ² , max. 1,5Nm
Terminal screw	M4 (Pozidrive PZ2)
Width	18 mm
Mounting position	any
Standard	IEC 61009
Length of neutral conductor	-
Operating temperature	-35°C ... +40°C

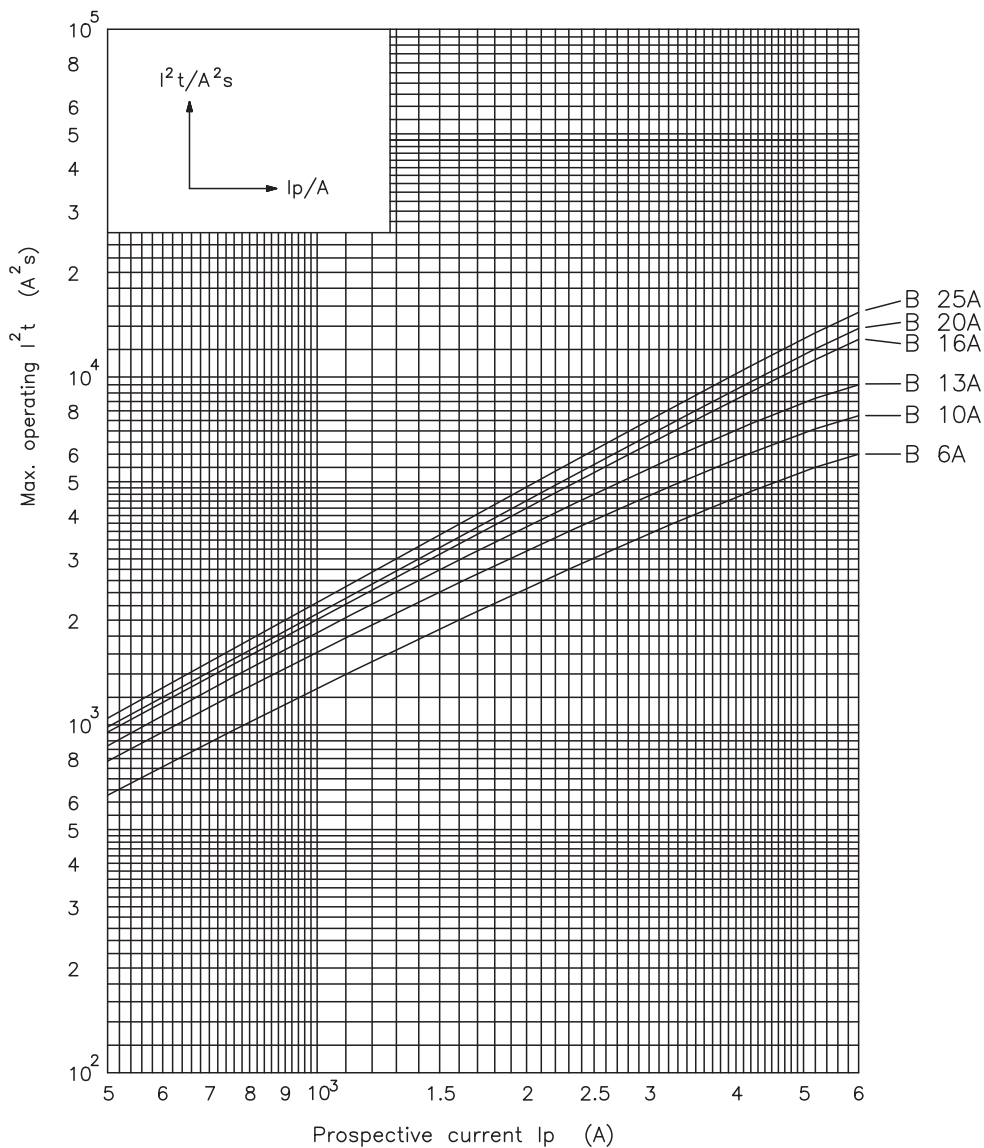
KZS - 1M UNI

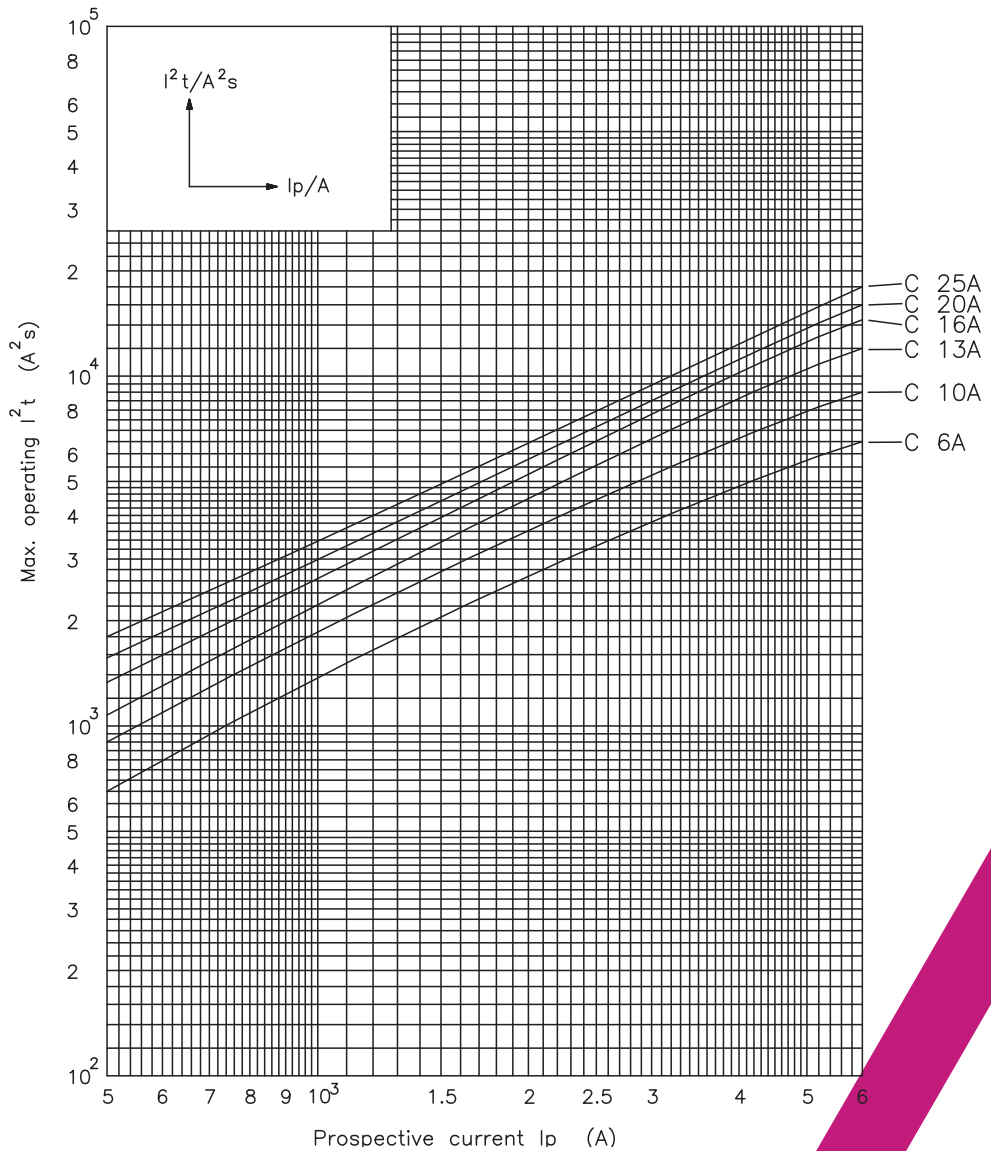
I_n [A]	$I_{\Delta n}$ [A]	Type A		Type AC			
		Code No. B	Code No. C	Code No. B	Code No. C		
6	0,01	002176001	002176011	002176101	002176111	111	1/72
10		002176002	002176012	002176102	002176112		
13		002176003	002176013	002176103	002176113		
16		002176004	002176014	002176104	002176114		
20		002176005	002176015	002176105	002176115		
25		002176006	002176016	002176106	002176116		
6	0,03	002176021	002176031	002176121	002176131	111	1/72
10		002176022	002176032	002176122	002176132		
13		002176023	002176033	002176123	002176133		
16		002176024	002176034	002176124	002176134		
20		002176025	002176035	002176125	002176135		
25		002176026	002176036	002176126	002176136		
6	0,1	002176041	002176051	002176141	002176151	111	1/72
10		002176042	002176052	002176142	002176152		
13		002176043	002176053	002176143	002176153		
16		002176044	002176054	002176144	002176154		
20		002176045	002176055	002176145	002176155		
25		002176046	002176056	002176146	002176156		

Time current characteristics I/t

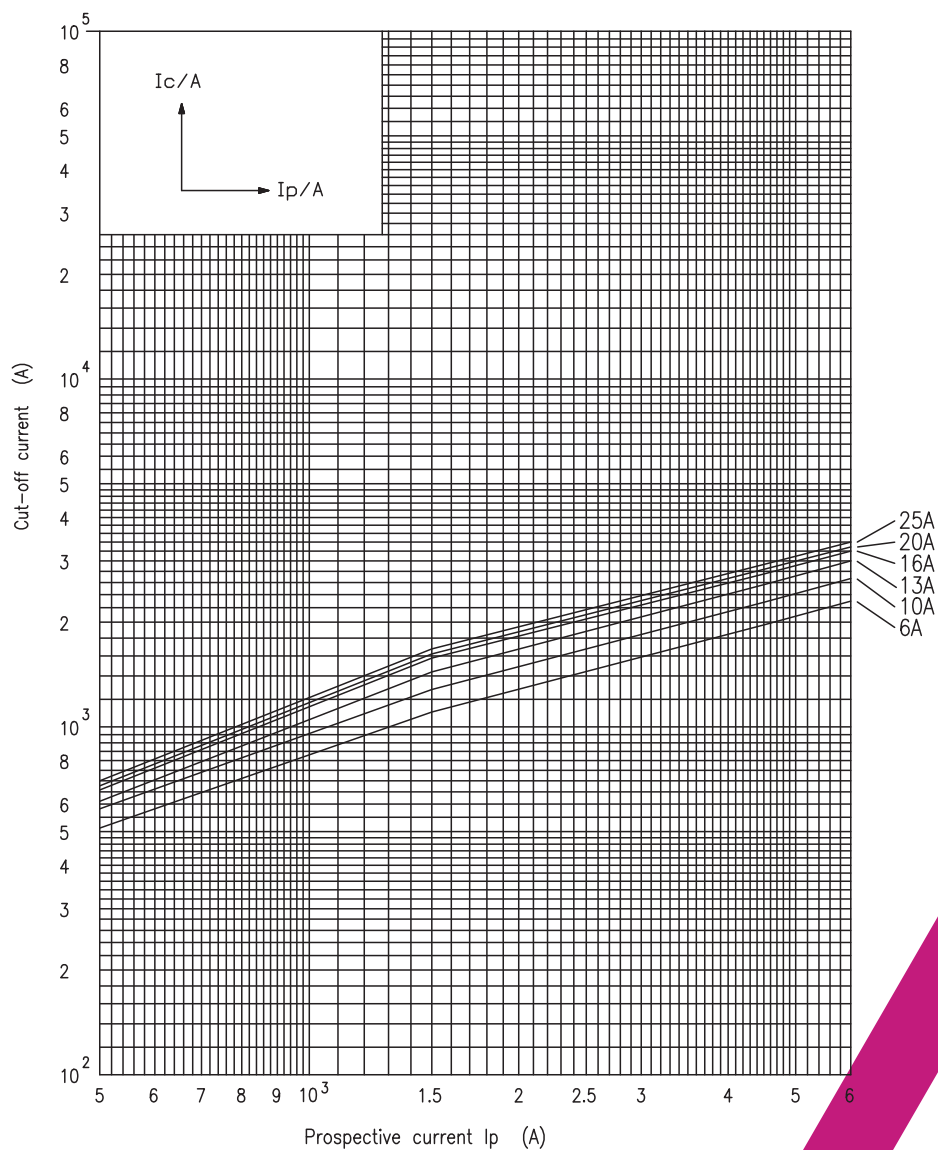


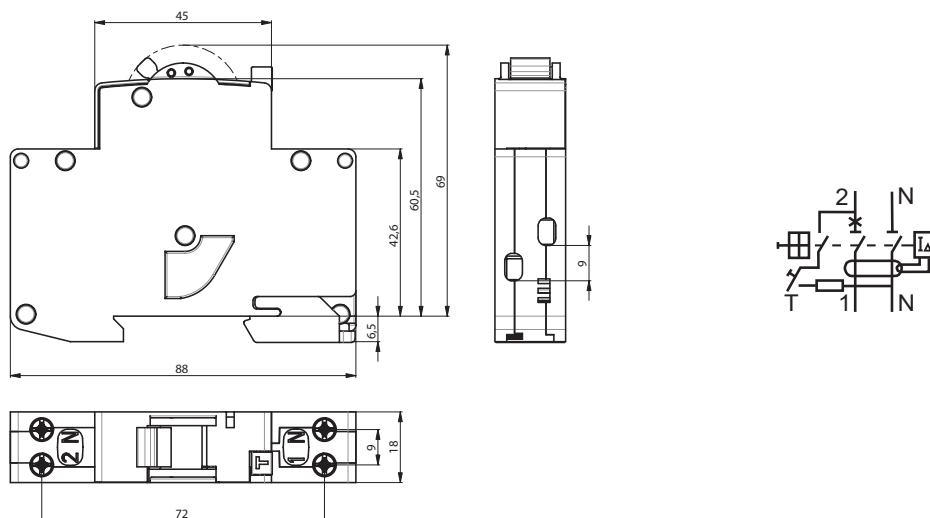
Melting energy characteristics I^2t





Cut-off current characteristics





ETI is a European brand that guarantees the quality and reliability of its products in accordance with the highest European standards for electrical product manufacturers, business systems, suppliers, dealers, workers and everyone who cares about electricity.

ETI actively co-creates global trends and develops sustainable electrical solutions that will help maintain our environment for generations to come.

Discover the broad range of ETI products at
www.etigroup.eu



Why choose ETI?

We believe that safety always comes first, and that all power needs control. Our products are manufactured to the highest quality standards.

Our past, present and future are based on a high quality offer of a complete range of products in the field of electrical protection and control. We constantly develop new products to meet the needs of the market and set new trends.





ETI Elektroelement d.o.o.
Obrezija 5
1411 Izlake
Slovenia, EU

