

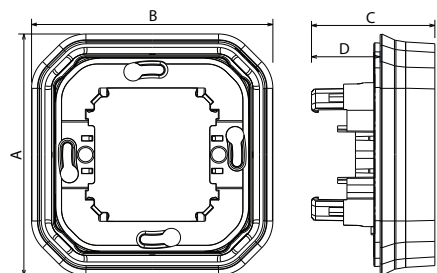
Plexo™

Surface-mounting box and support frame

Cat. No(s): 0 696 01L/02L/03L/06L/07L/08L/09L/10L/28L
 0 696 51L/52L/56L/68L/72L/80L/81L/82L/83L
 0 696 86L/87L/88L/89L/90L/92L/93L/94L/98L
 0 698 46L/53L/63L/66L/67L/90L

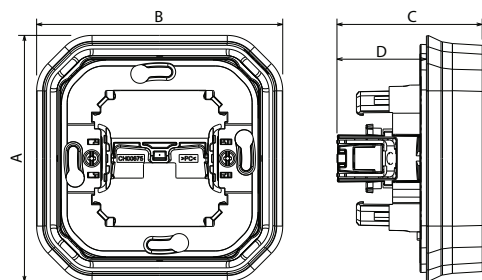
3. OVERALL DIMENSIONS (mm) (continued)

■ Flush-mounting



	A	B	C	D
1-gang	85.1	85.1	43.5	24.2
2-gang	85.1	156.2	43.5	24.2
3-gang	85.1	227.2	43.5	24.2

■ Flush-mounting with claws



	A	B	C	D
1-gang claws	85.1	85.1	50.2	30.9

4. TECHNICAL CHARACTERISTICS

■ 4.1 Material characteristics

Box, support: PP reinforced
 Front plate, rocker: ABS
 Entry gland, cover plate: PP + SEBS
 UV-resistant
 Halogen-free
 Resistance to salt spray: 7 days (168 h)
 Self-extinguishing:
 850°C/30 s for insulating components holding live parts in place.
 650°C/30 s for other insulating components.

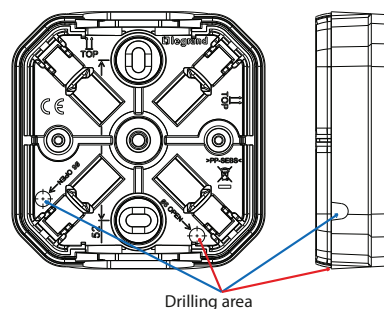
■ 4.2 Climate characteristics

Usage temperature: - 10° à + 40° C
 Storage temperature: - 25° C à + 60° C

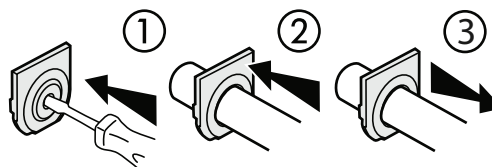
4. TECHNICAL CHARACTERISTICS (continued)

■ 4.3 Specific installation characteristics

Specific installation in case of condensate drain:
 Creation of drainage holes with a diameter of 6mm at the places indicated according to the direction of assembly.
 Be careful however when drilling the side hole, just cross the outer partition.



_ Implementation of cable glands:
 Pre-drilling with a screwdriver, insertion of the cable or tube, pulling in the opposite direction to insertion to reveal the flexible zone on the outside of the end piece.



5. CLEANING

Surface cleaning with a cloth.
 Do not use: acetone, tar remover, trichloroethylene.
 Maintenance with the following products: Hexane (EN 60669-1), Methylated spirit, Soapy water, Diluted ammonia, Bleach diluted to 10%, Window-cleaning products, Pre-saturated wipes.

Caution: A preliminary test should be carried out if other specific cleaning products are to be used.

6. STANDARDS AND APPROVALS

Compliance with standards of installation and manufacturing.
 Refer to e. catalogue.