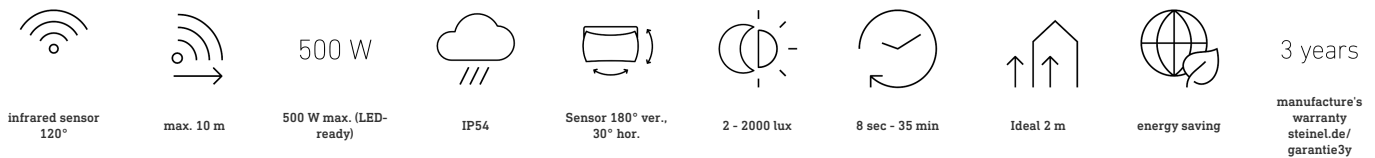
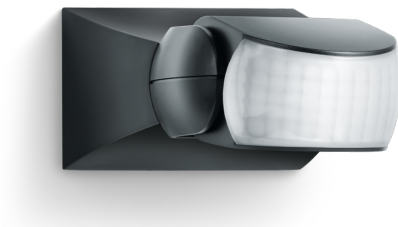


## Motion detector

# IS 1

black  
EAN 4007841 600419  
Article number 600419



### Function description

Targeted detection and attractive price. Infrared motion detector IS 1, for indoors and out, ideal for targeted coverage of small areas, 120° angle of coverage, reach up to 10 m, selectable time and twilight threshold, sensor turns through 30° and tilts through 180° for exact adjustment of the detection zone.

### Technical specifications

Dimensions (L x W x H)	120 x 80 x 50 mm	LED lamps < 2 W	16 W
Manufacturer's Warranty	3 years	LED lamps > 2 W < 8 W	64 W
Settings via	Potentiometers	LED lamps > 8 W	64 W
With remote control	No	Capacitive load in µF	88 µF
Version	black	Sensor Technology	Passive infrared
PU1, EAN	4007841600419	Mounting height	1,80 – 3,00 m
Type	Motion detectors	Mounting height max.	3,00 m
Application, place	Indoors, Outdoors	Optimum mounting height	2 m
Application, room	outdoors, front door, all round the building, terrace / balcony, courtyard & driveway	Detection angle	120 °
Colour	black	Angle of aperture	40 °
Colour, RAL	9005	Sneak-by guard	No
Includes corner wall mount	No	Capability of masking out individual segments	Yes
Installation site	wall, ceiling	Electronic scalability	No
Installation	Surface wiring, Wall, Ceiling	Mechanical scalability	No
IP-rating	IP54	Reach, radial	r = 3 m (9 m <sup>2</sup> )
		Reach, tangential	r = 10 m (105 m <sup>2</sup> )

<https://www.steinel.de>

Subject to technical modifications

10.2022 Page 1 from 3

Motion detector

# IS 1

black  
EAN 4007841 600419  
Article number 600419



## Technical specifications

Protection class	II
Ambient temperature	-20 – 50 °C
Material	Plastic
Mains power supply	230 – 240 V / 50 Hz
Switching output 1, resistive	500 W
Switching output 1, number of LEDs / fluorescent lamps	4 pcs.
Fluorescent lamps, electronic ballast	430 W
Fluorescent lamps, uncorrected	500 VA
Fluorescent lamps, series-corrected	500 VA
Fluorescent lamps, parallel-corrected	500 VA
Switching output 1, low-voltage halogen lamps	500 VA

Switching zones	260 switching zones
Twilight setting	2 – 2000 lx
Time setting	8 s – 35 Min.
Basic light level function	No
Main light adjustable	No
Twilight setting TEACH	No
Constant-lighting control	No
Interconnection	Yes
Type of interconnection	Master/master
Interconnection via	Cable

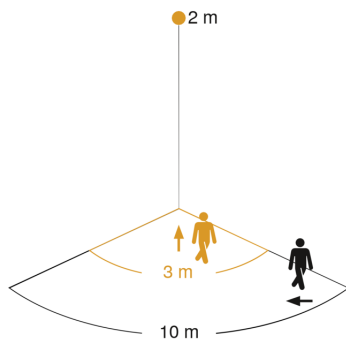
Motion detector

# IS 1

black  
EAN 4007841 600419  
Article number 600419

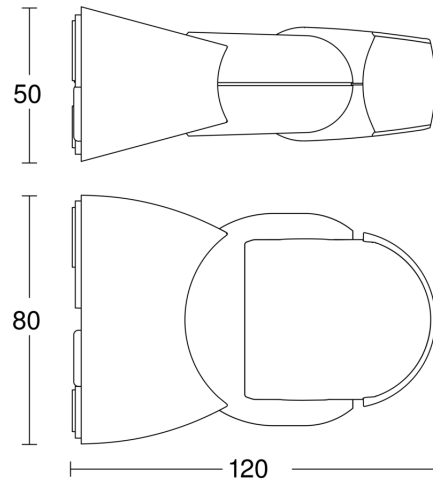


### Detection Zone

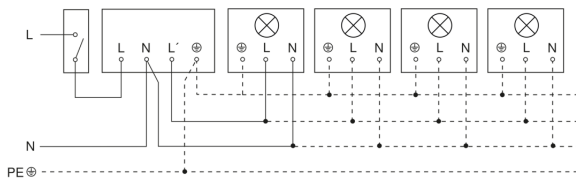


Mögliche Montagehöhe: 1,80 m – 3,00 m  
Orange: radial  
Schwarz: tangential

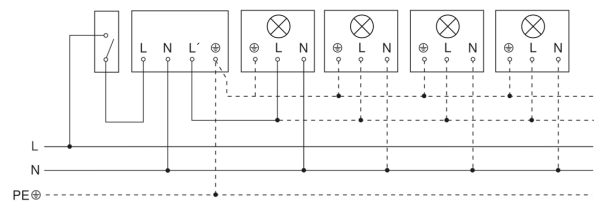
### Dimension Drawing



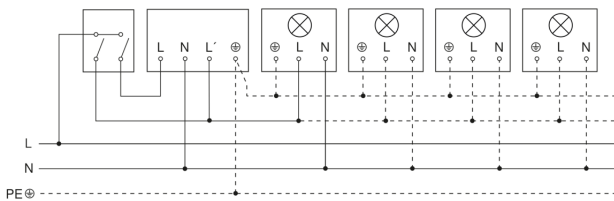
### Light without neutral conductor



### Light with neutral conductor



### Connection using two-circuit switch for manual and automatic operation



### Circuit diagram Connection via a changeover switch for continuous and automatic operation

